

HOFMANN®



BLA10205H

10K Scissor

Alignment Lifts

HOFMANN 10K SCISSOR LIFTS

Hofmann continues attention to quality and reliability with the 10,000 lb. capacity scissor alignment lift. This lift comes in two wheelbase lengths (165"/175") in both flush-mount and surface-mount configurations to meet the needs of a wide variety of shops. The 10K Scissor Lift's heavy-duty 26" wide runways provide alignment accuracy for cars and dual wheel trucks. Two work steps, 8 positions on each runway, allow easy access to under hood for steering adjustments. Hofmann's 10K Scissor Lift also includes an integrated air kit for connecting optional Roller Jacks.



PRODUCTIVITY-ENHANCING FEATURES

- Totally open access between the runways front to rear.
- Proportionally-controlled, hydraulically-synchronized lifting systems with 2 powerful heavy-duty lifting cylinders to maintain level from floor to 72" of lifting height.
- Durable 72" slip plates glide on over-sized roller balls, allowing for the range of motion required to perform rear alignment corrections. Slip plates have strategically-positioned openings in the runway, quickly disperse water and dirt, reducing maintenance - allowing for reliable performance every time.
- Long and wide runways allow for alignment service on a wide range of vehicle widths and wheelbases.
- Work steps on each side can be adjusted to 8 different positions, granting easy access to underhood and steering wheel adjustments.
- The triple safety system includes air-actuated mechanical locks, velocity fuses, and pressure-sensing flow control valves.
- Low-profile design of 9" allows drive-on approach for low-profile vehicles.
- The operator console is completely enclosed, protecting electronic and hydraulic components.
- Integrated air kit for connection to Roller Jacks. Center runway air connections to Jack Beams allow hose routing to inlet at rear of jack - no interference for operator.



Optional premium turntables prevent runway scratching and allow for full range of motion when making alignment adjustments.



Large twin-interlocking safety locks with 18 level and locked positions.

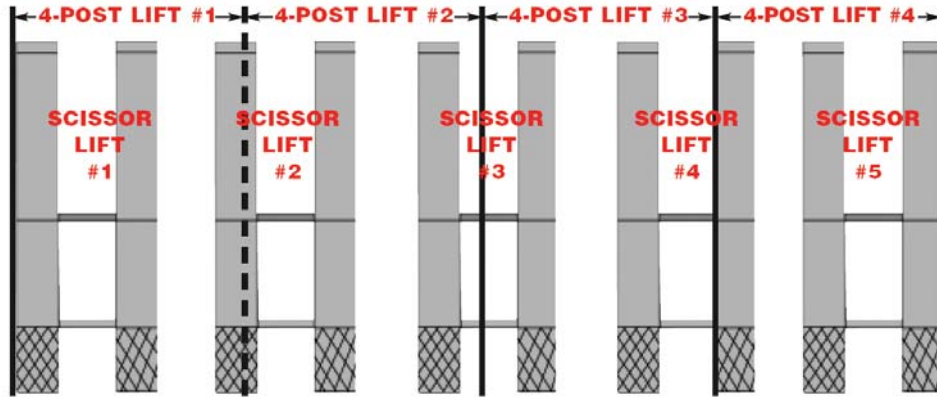


Work steps on each side can be adjusted to 8 different positions, granting easy access to underhood and steering wheel adjustments.

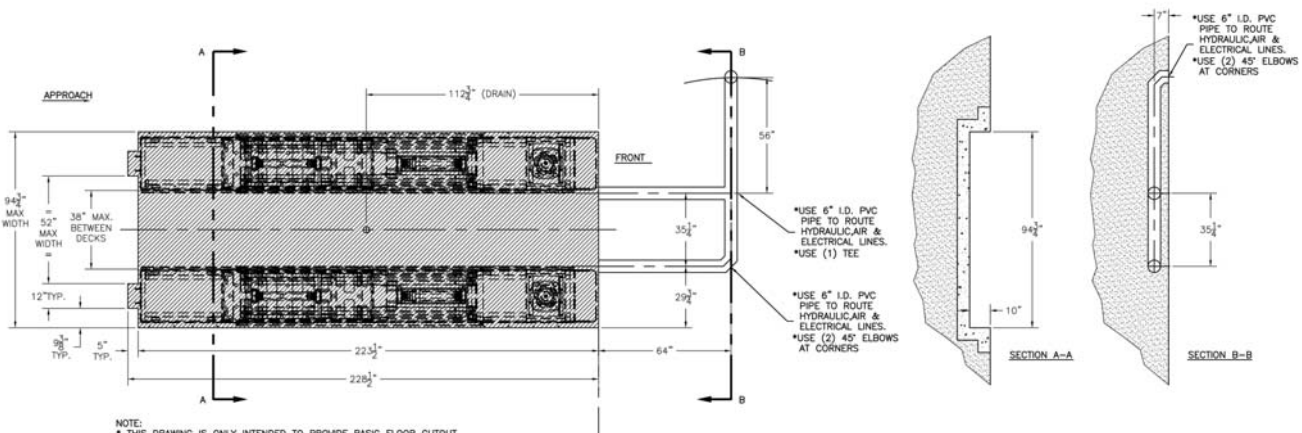
*Get maximum productivity out of your available bay space with the use of Hofmann's Scissor lifts!
Scissor lifts also lift straight up and down for better front to rear space utilization as well.*

SPACE-SAVING FEATURES

Five Scissor Lifts in the Same Space as Four 4-Post Lifts!



Flush Mount
(Model No. BLA10195HFM)



Models: BLA10195H / BLA10205H

10K Scissor Alignment Lifts



SPECIFICATIONS

	Full Open Center	4 Wheel Alignment Wheel Base (min/max)	2 Wheel Alignment Wheel Base	General Service Max. Wheel Base	Deck Surface Length	Overall Width	Overall Length	Maximum Raised	Shipping Weight Height
BLA10195H	Y	84 1/2"/155"	165"	179"	195 1/2"	92 1/2"	255 3/8"	72"	4,430 lbs.
BLA10205H	Y	84 1/2"/155"	175"	189"	205 1/2"	92 1/2"	265 3/8"	72"	4,630 lbs.
BLA10195HFM	Y	84 1/2"/155"	165"	179"	195 1/2"	92 1/2"	218 3/8"	72"	4,280 lbs.
BLA10205HFM	Y	84 1/2"/155"	175"	189"	205 1/2"	92 1/2"	228 3/8"	72"	4,480 lbs.

F.M. = Flush Mount

Lifting capacity of all lifts is 10,000 lbs. Lift time on all units approximately 80 seconds; lowering time on all units approximately 60 seconds. Minimum lowered height on all units approximately 9". Runway width on all units approximately 26". All units come standard with 230V/1Ph/60Hz power requirements. (Other power configurations are available as an option.)

Hofmann manufactures a complete line of wheel service equipment.



Imaging & Conventional Alignment Equipment



High Performance Wheel Balancer with All Automatic Data Entry



Tire Changer Designed to Service All Automotive Tires



Combination Brake Lathes for Rotors, Drums and Flywheels



USA

309 Exchange Avenue • Conway, AR 72032
(800) 251-4500 • (501) 505-2662
Fax (501) 450-2085 • www.hofmann-usa.com



Canada

6500 Millcreek Drive • Mississauga, ONT L5N 2W6
(800) 267-2185
Fax (905) 821-2073 • www.hofmann.ca

