

HOFMANN®



***geoliner™* 600/650**

WHEEL ALIGNERS

HOFMANN IMAGING TECHNOLOGY

Set-Up To Readings In Under 2 Minutes

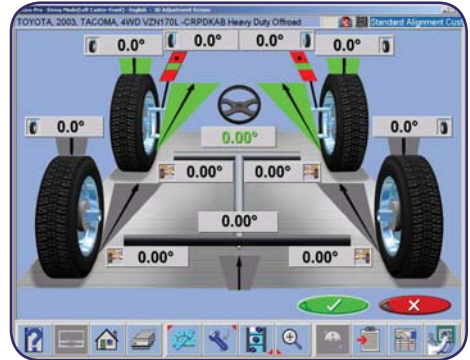
Imaging Technology allows you to do more alignments in less time. The patented non-electronic shatter-proof wheel targets eliminate service calls for calibrations and wheel sensor maintenance.



1 Mount wheel targets



2 Roll vehicle back or pull forward only 8"

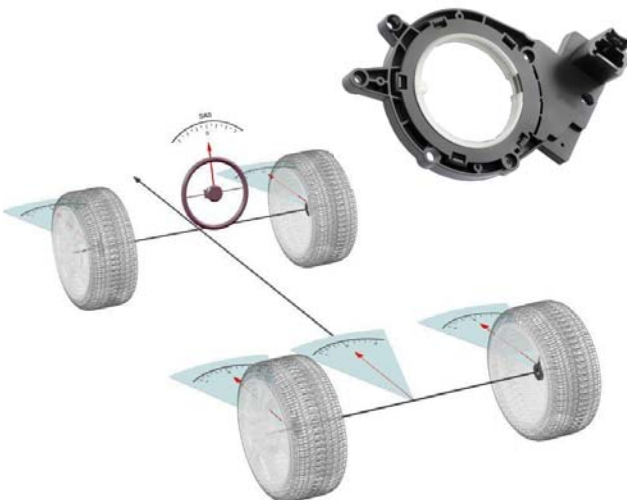


3 Obtain all alignment readings in under 2 minutes. Adjust vehicle using live measurements.

EZ-LINK™* STEERING ANGLE SENSOR (SAS) RESET

EZ-Link™ software alerts the technician of OEM service & maintenance procedures related to Electronic Stability Control and Electric Power Steering systems.

OEM instructions guide the technician through the process of resetting the steering angle sensors along with other sensors as required. EZ-Link™ includes manual as well as electronic resets.



⚠ Determine if this vehicle is equipped with Electronic Power Steering (EPS)

Always reference OEM documentation for up to date procedures.

After replacing the power steering motor and module assembly 3 procedures must be performed, Steering Position Sensor Calibration, Torque Sensor Calibration and Steering Tuning.

If replacing the steering column assembly only, the Steering Position Sensor and the Torque Sensor Calibration procedures must be performed.

The Steering Position Sensor and Torque Sensor Calibration procedures should also be performed after a suspension alignment.

Certain steering symptoms such as uneven return to center, poor center feel, uneven left/right assist, can be corrected by performing the Steering Position Sensor and Torque Sensor Calibration procedures.

The Torque Sensor Calibration:

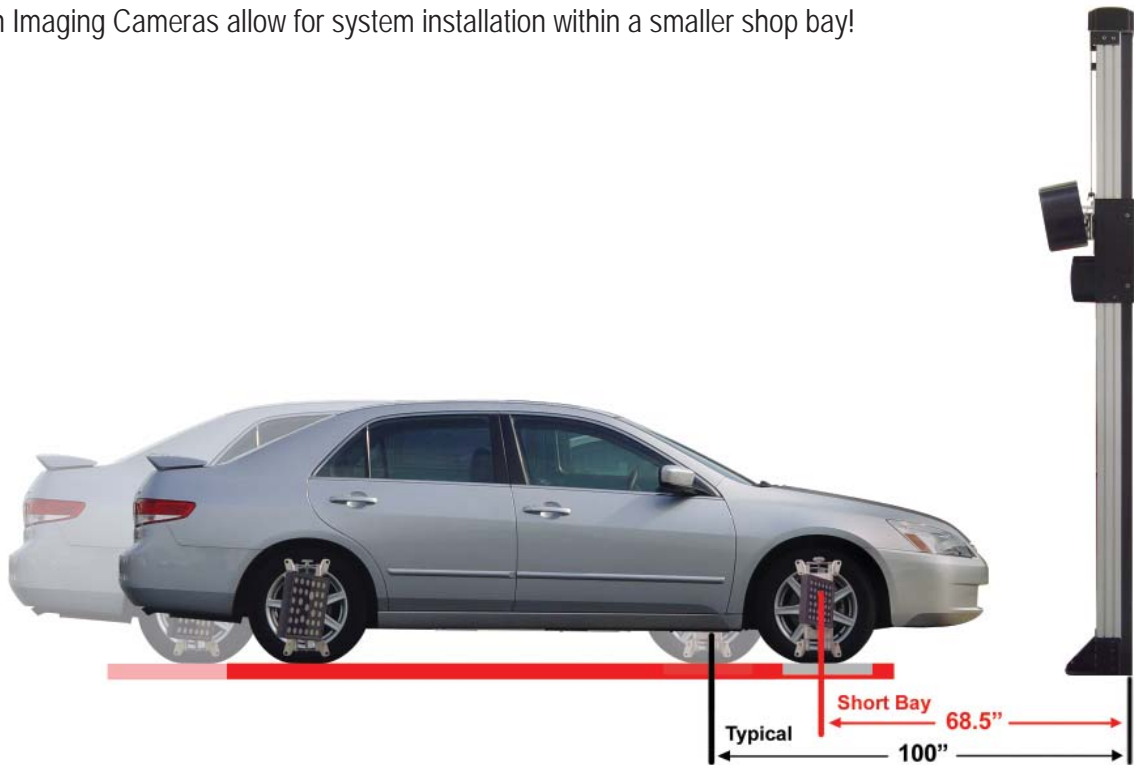
1. Turn the ignition OFF, install the scan tool.
2. Turn the ignition On, with the engine OFF.

Important: After centering the steering wheel, remove hands and other objects from the steering wheel and ensure the suspension is relaxed and no bias or uneven force is being applied to the steering system.

3. Center the steering wheel.

ALIGNMENT BAY REQUIREMENTS

High-Definition Imaging Cameras allow for system installation within a smaller shop bay!



IMAGING SYSTEM FEATURES



Optional VHCS

- Variable-Height Camera Support (EAA0321J19C), shown with standard Camera Beam
- Eliminates the need for fixed-position/level surfaces during alignments
- Positions cameras in range with a touch of a button - even during the alignment process!

VODI™

- Vehicle Orientation Directional Indicator, located on camera beam
- Guides technician through measuring process
- Reduce the amount of time spent walking back and forth from the vehicle to the aligner console



Universal Wheel Clamps

- Handle wheel diameters ranging 13" to 24" standard (up to 28" with optional clamp extensions EAK0268J62A)
- Interchangeable grippers minimize wheel damage

3D Animation

- Provides vehicle-specific adjustment information with easy-to-understand 3D graphics
- Refers to spare parts or special tools as applicable



* Patented and/or Patent Pending Features

geoliner™ 600/650

HOFMANN®



FEATURES

- A-Arm Adjustments
- Advanced Customer Database with Backup/Restore
- Adjust Camber Only
- Adjustment Help Files
- Advanced Alignment Measurements with Reading/Specifications and Cross Values
- Aligner System Diagnostics
- Backup/Restore of Calibration and Setup Data
- Calibration History
- Caster and SAI Turntables
- Custom Vehicle Specifications
- Elevated Adjustments
- EZ-Toe*
- EZ-Track Database
- 4-Wheel Steer Adjust
- FrameCheck™ Light Truck Frame Angle
- Front & Rear Camber (-15° to +15°)
- Front and Rear Toe
- Front Caster (-28° to +28°)
- Front/Rear/All/Zoom Readings
- Included Angle
- Individual Camber
- Individual Caster
- Individual Toe
- Initial/Final Color Print
- Integrated Help System (PDF)
- Light Truck Bushing
- Live Caster, Camber and Toe – Elevated
- Live Caster, Camber and Toe – Turntables
- Meter Screens
- Multiple Clamp Support
- Multiple Lift Support (3)
- Multiple Print Formats
- Multiple Units of Measure
- NorthStar Shim Program
- Rear Shim Programs
- Regional Specifications
- Remote Control (Optional)
- Ride Height*
- SAI & Thrust Angle
- SAI Elevated
- 3D Animation
- Thrust Align Only
- Toe-Out-On-Turns
- Tools, Parts, and Adjustment Instructions
- 28 Languages
- 2-Wheel Alignment
- Variable-Height Camera Support Controls
- Vehicle Specs: 25+ Years
- Video Help



geoliner™ 650
EEWA712AL
Shown with Optional Variable-
Height Camera Support
(EAA0321J19C)

SPECIFICATIONS

Equipment Specifications

- Wheel size: 13" - 24"
- Tire diameter: Unlimited
- Tread width: 48" - 96"
- Wheel base: 79" - 180"
- Power Requirements: 120/230V, 1Ph, 60Hz

Standard Accessories

- Universal Wheel Clamp (13"-24")/Target Kit: EAK0268J52A
- Steering Wheel Holder: 00055502000
- Brake Pedal Depressor: 00000096000
- Camera Beam Assembly: EAA0305J48B
- Color Ink Jet Printer: EAK0268J05A

Optional Accessories

- 28" Universal Wheel Clamp Extension Kit: EAK0268J62A
- Alloy Quick-Clamp Kit: EAK0268J63A
- Frame Angle Gauge: 8-05320A
- Remote Display Readout: EAK0268J08A
- Convex Mirror: EAK0289J35A
- BMW 7 Series / MB A-Class Hub Pin Kit: EAK0256J41A
- Porsche Alloy Adapter Kit: EAK0222J20A
- Rollback Rubber Pads: JBC04600000
- Wheel Clamp Floor Stand: EAK0289J71A

Recommended Accessories

- Premium Turntables: EAK0289J06A
- Paddle Kit for Premium Turntables: EAK0277J28A
- 4-Post Rollback Kit: EAK0277J39A
- 12K Scissor Rollback Kit: EAK0277J40A
- 12K Scissor Roll Forward/Rollback Kit: EAK0277J47A
- 10K/14K Scissor Rollback Kit: EAK0277J67A
- Hunter/Rotary Rollback Kit: EAK0277J45A

Optional Camera Support Configurations

- Variable-Height Camera Support: EAA0321J19C*
- Fixed-Height Camera Support: EAA0321J01A*
- FHCSE/ETCS Kit: EAK0289J79A*
- 8" Wall/Pit Camera Fixture: EAK0289J63A
- 36" - 60" Wall/Pit Camera Fixture: EAK0289J36A
- Electronic-Tilt Camera System: EAK0289J64A



geoliner™ 600
EEWA721AL
Shown with Optional Fixed-Height
Camera Support Extended and
Electronic-Tilt Camera System
(FHCSE/ETCS Kit)

† EEWA712AL Only

* EEWA721AL Only

* Patented and/or Patent-Pending Features



USA

309 Exchange Avenue • Conway, AR 72032
(800) 251-4500 • (501) 505-2662
Fax (501) 450-2085 • www.hofmann-usa.com

HOFMANN®



Canada

6500 Millcreek Drive • Mississauga, ONT L5N 2W6
(800) 267-2185
Fax (905) 821-2073 • www.hofmann.ca

